

NORTH FORK COMMUNITY THEATRE
PRESENTS



LEADING *Ladies*



By KEN LUDWIG

January 17 - February 2, 2025

PRESIDENT'S MESSAGE

Dear Friends,

Welcome to the North Fork Community Theatre and thank you for joining us as we continue our 66th season with Ken Ludwig's *Leading Ladies*— a cross-dressing farce.

The rest of our season includes another great comedy, an iconic American classic and a rock musical for our summer Youth on Stage production. Watch for a Magic Show in the spring and our annual Gala in June. Behind the scenes, we will continue working to make the NFCT the best that it can be for our audience, performers, musicians and crew.

The success of the NFCT depends on all of us. The support we receive from our community never ceases to amaze me. I want to thank each and every one of you for your continued support.

Mike Hipp
President

Board of Directors

Michael Hipp, *President*
Mark Sisson, *Vice President*
Bill Gardner, *Treasurer*
Dina Mondello, *Secretary*

Directors:

Julia Cappiello
Nancy DiGirolamo
Robert Horn
Chris Lepore
Stephen Ness
Gene O'Brien
Robert Taylor

You are in a space where hate has no place whether it be in language, action or inaction and if it is required as part of the entertainment on our stage, may it be a tool of learning for us all.

Proud Member of

aact
AMERICAN ASSOCIATION
OF COMMUNITY THEATRE

Visit our website:
WWW.NFCT.COM



Find us on:
facebook.

We welcome your feedback. Please send any comments or suggestions to President of the NFCT, Box 86, Mattituck NY 11952.

NORTH FORK COMMUNITY THEATRE

presents



LEADING \$ Ladies \$



By KEN LUDWIG

Director
Robert P. Horn

Assistant Director
Stephen Ness

Producer
Julia Cappiello

*Leading Ladies is presented by special
arrangement with Concord Theatricals*

The use of audio or video recording devices, as well as any still
photography (with or without flash), is strictly prohibited.

Thank you.

CAST

Daina Reynolds	Meg Snider
Alek Lewis	Leo Clark
Nicholas Auletti	Jack Gable
Kat Motlenski	Audrey
Lon Shomer.....	Reverend Duncan Wooley
Suzette Delia Reiss.....	Florence
Gene O'Brien.....	Doc Myers
Eric Koch.....	Butch Myers

PRODUCTION TEAM



Director.....	Robert P. Horn
Asst. Director/Costume Design/Props/Set Decoration	Stephen Ness
Producer	Julia Capiello
Set Design/Set Construction	Robert Taylor
Choreographer/Production Assistant.....	Jocelyn Podlas
Set Construction.....	The Tuesday Crew
Stage Manager.....	Addison Heck
Sound Design.....	John Lovett
Lighting Design.....	David Sheer
Backstage Crew	Jonathan Parramore
Lighting Operators	Sam Kerrigan, Robert Taylor
Sound Operators	Katrina Lovett, John Lovett, Alex Boerum-Ruhl, Michael Curtin, Leslie Thompson, Rigel Braverman

TIME AND PLACE

York, Pennsylvania, 1958

SPECIAL THANKS:

We would like to thank the following who have helped bring this production to the stage. Our casting committee, Dee Martin, Michael Horn, Marilee Scheer, Stephen Ness, the Board of Directors, Kim Capiello and the Play Reading Committee. We'd also like to thank The Tuesday Crew (Gary Ristau, John Consiglio, Dick Romeo, Ben Zukowsky, Jim Calkins, Dave Higbee and Willy Martin) for building our set and welcome to our new volunteers who helped (Steve Amiaga, Tom Collins, Steve Oakley, Steve Tulumba).



Did you receive
a fancy new device
for the holidays?

*Why, how
thoughtful!*

*Oh, what a
generous gift!*

I bet you can't wait to start using it!

So...any idea how?

If you're confused or frustrated about your smartphone, tablet, computer, or other gizmo, do yourself a favor and call . . .

Mark's Personal TECH SUPPORT

Serving the East End of Long Island

✓ patient ✓ private ✓ affable ✓ affordable

Call or text 631 • 345 • 4455

Mention NFCT to get your first half-hour free!

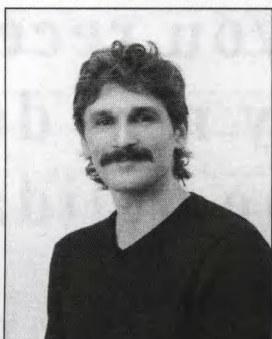


www.MarksPTS.com

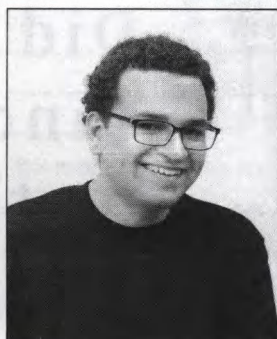
CAST



Nicholas Auletto



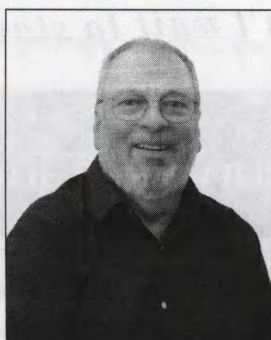
Eric Koch



Alek Lewis



Kat Motlenski



Gene O'Brien



Suzette Delia Reiss



Daina Reynolds



Lon Shomer

CAST BIOS

Nicholas Auletta (*Jack Gable*) Nicholas is an actor, director, and playwright from East Quogue, NY. He graduated with a B.A. in Theatre from Lycoming College. Most recently, he was Man in *The Dispatchment Society* (Corchaug Repertory Theatre). Previous acting credits include Marcellus, Player, Clown, and Fortinbras in *Hamlet* (Northeast Stage), *A Funny Thing Happened on the Way to the Forum* (Hamp-ton Theatre Company), McDuff in *Macbeth* (Northeast Stage), and Ernie, Bert, Harry, and Mr. Welsh in *It's A Wonderful Life* (Northeast Stage). Plodgett in *A Chemical Imbalance* (bootsonthegroundtheater), Franz Liebkind in *The Producers* (NFCT), Jedidiah Shultz, Matt Galloway, and Russell Henderson in *The Laramie Project* (NFCT), Valdez in *Jesus Hopped The 'A' Train* (Unworldly Ensemble), Miles in *She Kills Monsters* (Theatre-Off Kilter), and Michael Evans in *Dancing at Lughnasa* (Lycoming College). His works that have been produced are *In The Wee Small Hours* (with Theatre-Off Kilter), *Pharmacy Jesus* (Unworldly Ensemble), *Over and Under the Wings of Vultures* (Corchaug Repertory Theatre), and *Bite Me Broke* (Northeast Stage). Nick is grateful for the friendly cast and crew for guiding him throughout this process and would also like to thank his friends, family, and Esme for all their support.

Eric Koch (*Butch Myers*) When the last summer sun sets, Eric sheds his UV windbreaker and sails to the North Fork Community Theatre. Welcoming the role of Butch Myers to his budding list of credits, Eric would like to thank his girlfriend, Daina, for encouraging him to keep his word; a vow he set for himself to pursue a long time desire to act. Albeit a first, not a last. Thank you to the fans who have been there from the start.

Alek Lewis (*Leo Clark*) Alek is thrilled to be involved in his second NFCT production. He last performed on the NFCT stage during the 2017 Youth on Stage production of *Thoroughly Modern Mil-lie*. Alek has performed in many productions with the Riverhead Faculty and Community Theatre, including *Miracle on 34th Street: A Live Musical Radio Play* (Fred Gailey), *The Addams Family* (Lucas) and *The Glass Menagerie* (Jim). He also directed *The Foreigner* and *Love Letters* for RFCT last year. A 2021 graduate of Stony Brook University, Alek works as a local journalist covering his hometown for RiverheadLOCAL.

Kat Motlenski (*Audrey*) Kat is ecstatic (that means excited) to join the wonderful cast of *Leading La-dies*. She is a recent graduate of Post Theatre Company where she studied Musical Theatre Performance and Shakespeare extensively. Past credits include *Spamalot*, *Follies*, *Pippin*, *The Laramie Project*, *Caba-ret*, and *Sweeney Todd*. She wants to thank her mom and the rest of her family and friends for their unwavering support. She also wants to thank the talented cast, crew and production team for making this show as special and hilarious as it is. Enjoy the show! @kat.mot

Gene O'Brien (*Doc Myers*) Gene is happy to be back on stage at NFCT, playing Doc in *Leading Ladies*. He recently appeared in Sondheim's *Follies*, *A Catered Affair* and *The Producers* here at NFCT. Other favorite roles were Judas in *Jesus Christ Superstar* at Country Gate Players in Belvidere, NJ, Jeff in *Brigadoon* at Chansonette Theatre in Easton, PA, and Rusty Charlie in *Guys and Dolls* at Civic Theatre in Allentown, PA. Gene also serves on the Board of Directors at NFCT. In real life, Gene works as the IT Systems Manager for a Fertility Practice on Long Island.

Suzette Delia Reiss (*Florence*) Suzette is beyond thrilled to be in *Leading Ladies* with such a terrific cast, crew, and director! Previous shows have included Northeast Stage's *Playlets & Poetry Festival* (created and directed by Nicholas Auletta), a staged reading of *Lessons from Hollywood* (by James A. Pritchard), *Macbeth* (directed by A.D. Newcomer), *It's A Wonderful Life: A Live Radio Play* (directed by Michael Disher), NFCT's *The Laramie Project* (directed by Huck Hirsch) and *The Three Sisters* (directed by Peg Murray). Suzette graduated from NYU's Experimental Theatre Wing many moons ago. She currently practices real estate locally and loves the beautiful North Fork.

Daina Reynolds (*Meg Snider*) Born and raised under the salt kissed winds of Breakwater Beach in Mattituck, Daina makes her return to the big stage as Meg. Drawing inspiration from her days as a student member of the Mattituck High School playwright across all facets of production, she is thrilled to be back on the scene and invites you to enjoy the laughs.

Lon Shomer (*Reverend Duncan Wooley*) Lon is excited to, once again, return to the North Fork Community Theatre stage, so quickly after appearing in Stephen Sondheim's *Follies!* Favorite past NFCT roles include Mr. Twimble and Wally Womper in *How to Succeed in Business Without Really Trying*, Walter Flood in *Becky's New Car* and Victor Frankenstein in *Young Frankenstein!* Lon, as always, would like to express his love and gratitude to his wife Shari and daughter Jamie, the most wonderful supporting cast, a husband and father could ever have. THEY are truly the stars!

PRODUCTION BIOS

Julia Cappiello (*Producer*) Julia is elated to be working on another production here at the North Fork Community Theatre. She has thoroughly enjoyed watching the cast of *Leading Ladies* bring out the humor and charm of this show live on stage. While not working on a production, Julia is also a proud member of the Board of Directors at the NFCT. She would like to extend her congratulations to Robert Horn on another great production and thanks him for having faith in her from the start. Lastly, Julia would like to thank her mom for not only passing down her expertise as a producer — but for her unwavering support, knowledge, and belief in her.

Addison Heck (*Stage Manager*) Addison is a junior at Riverhead High School. She has been a part of many productions with RFCT and NFCT and enjoys both on stage and behind the scenes. She also performs in various band groups and is the team captain of Unified Sports at RHS. She is thrilled to be working with Robert Horn for another amazing production!

Robert Horn (*Director*) Robert is pleased to once again be a director at the North Fork Community Theatre. He has been involved with the NFCT for 15+ years and he's proud to be a member of the board of directors. Some of the past shows Robert has been involved with include *Outside Mullingar*, *Ripcord* and last year's *Wonder of the World*. He would like to thank his family and friends for their continued support, especially his daughter, Emily.

Stephen Ness (*Assistant Director/Costume Design/Props/Set Decoration*) This is Stephen's 16th show at the NFCT and his 4th show with Robert Horn. Stephen has assistant directed, costumed, worked on props, set decorated and even directed his first show, *Follies*, last spring! Stephen is thrilled to be working with this amazing cast as well as a stellar production team.

Jocelyn Podlas (*Choreographer, Production Assistant*) Jocelyn is thrilled to be a part of the production team of *Leading Ladies!* Jocelyn is a substitute elementary teacher and longtime lover of theatre. You may have previously seen her in NFCT's production of *Spamalot* (Co-Choreographer/Featured Dancer), *Cinderella* (Charlotte), or in *9 to 5* (Roz). Jocelyn would like to thank the rest of the production team for welcoming her with open arms, the cast and crew for their talent and hard work, and her family for supporting her passion. Enjoy the show.

Robert Taylor (*Set Design & Set Construction*) *Leading Ladies* is the 50th production Robert has been involved with. In addition to directing, acting, lighting, set design, set construction, special effects, and general maintenance, he is also a board member. His cell phone thinks that NFCT is his residence.

NORTH FORK COMMUNITY THEATRE



BUILDING ON TRADITION CAMPAIGN

Thank you for your ongoing support of the Theatre. With your help, we are renovating our beloved theater. Our plan is to keep the building's historic charm, but make significant improvements to the theater to enable our patrons to better see, hear and experience live theater. The first phase of the renovations included an expanded stage, an orchestra pit, and modern lighting and rigging infrastructure. We recently upgraded our sound system to use wireless microphones and extended the stage over the pit orchestra. The next phase of the renovation will include upgrades to the auditorium and seats. Please consider making a donation at nfct.com or by using the form on back cover.

Please consider making a donation today at
www.nfct.com or by filling out the form on the
back cover and mailing a check to: NFCT, Box 86, Mattituck, NY 11952
For a tour of the NFCT or more info about the Renovation Campaign,
contact Mary Kalich at 917-334-6639 or campaign@nfct.com.

It takes a community...

Proud to be part of the **Cast & Crew of LEADING LADIES**




Suzette Reiss


Lic. R.E. Salesperson

M 516.815.5657 | O 631.298.6147

suzette.reiss@elliman.com

 **DouglasElliman**

elliman.com

© 2025 DOUGLAS ELLIMAN REAL ESTATE.  EQUAL HOUSING OPPORTUNITY 2488 MAIN STREET, P.O. BOX 1251, BRIDGEHAMPTON, NY 11932. 631.537.5900.



The Alley Cat Thrift Shop

Located at First Congregational Church

103 First Street, Riverhead, NY 11901

Telephone 631-727-2621

Hours: Tues. & Thurs.: 10 am - 2 pm, Sat: 9 am - 1 pm

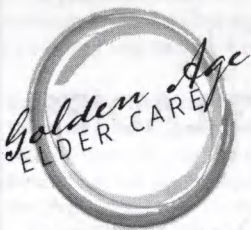
Volunteers always welcome.

Advertise in the NFCT Programs

NFCT Rates - 5 Shows for the Price of 4!

size	1 show	2 shows	3 shows	4 shows	FULL SEASON
FULL PAGE	\$250	\$500	\$750	\$1000	\$1000
1/2 PAGE	\$150	\$300	\$450	\$600	\$600
1/4 PAGE	\$75	\$150	\$225	\$300	\$300

Let North Fork Community Theatre patrons know about your business!
Please call 631.298.4500 or E-mail us at: advertising@NFCT.com



Experienced Caregivers East End Based Non-Medical Care
 Professional & Discreet Hourly or 24/7 Individualized Plan

Our Purpose

modernizing and upgrading the home care experience for both our clients and those who care about them

www.goldenageeldercare.com

Email: Jenna@goldenageeldercare.com Call: 631-834-5914

facebook message /instagram: @goldenageeldercare

HARD CORNER PARTNERS LLC



The NFCT appreciates your support!

Letter from The Director...

Welcome and Happy New Year! So happy that you joined us today at the North Fork Community Theatre as it is the first play of our 66th season. We are proud to present to you Ken Ludwig's *Leading Ladies*.

Mr. Ludwig's plays have a knack for farce comedy meaning characters pop in and out, humorous instances, fast pace, and lots of laughs..... and this show is no exception! I picked this show for the NFCT so audience members could sit back and enjoy a laugh at the expense of Leo and Jack's crazy plan. I cannot think of a better way to spend time with us and kick off the new year than with a laugh.

Once again thanks for joining us today. -Robert P. Horn

NORTH FORK COMMUNITY THEATRE

GIVE THE GIFT OF THEATER!



Gift Certificates for a Four Show
Season Subscription or for
Individual Shows are Available.

www.nfct.com - 631.298.NFCT (6328)

From the Artist's Corner SHARED VISION

Shared Vision is a group of local artists – (in no order) Imelda Corcoran Farrell, Trish DeBlasio, Fran Liburt, Penny McCallion, and Robin Ziemacki and led by Lee Harned, an Art Educator of 35 years, and previously, the Art Coordinator for Mattituck High School who has extended her teaching by continuing workshops in her Laurel Studio.



As longtime residents of the North Fork, these artists share a common sensitivity to the changing colors of the season, the effect of light on the landscape and surrounding water, the wonder of the sunrise and sunset, as well as the bucolic nature of our farm fields, vineyards, architecture and winding creeks. They travel the same roads, view the same sightings and some even live in the same neighborhood; however, they each express themselves individually by infusing a love of the environment in which they live into their work.

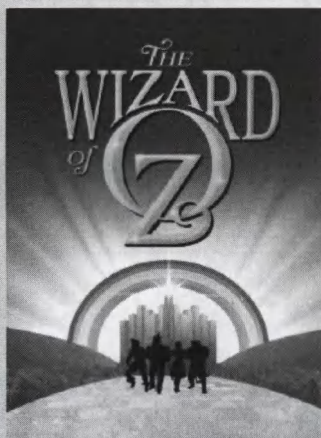
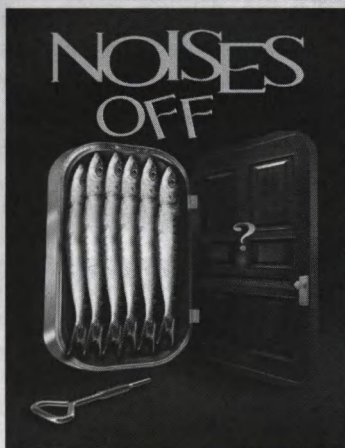
For purchase inquiries, please contact Stephen Ness, sness1172@gmail.com. Additional works are available at the Old Town Arts and Crafts Guild in Cutchogue.

NFCT'S 66TH SEASON

Tickets at www.nfct.com

NOISES OFF

March 14th - 30th

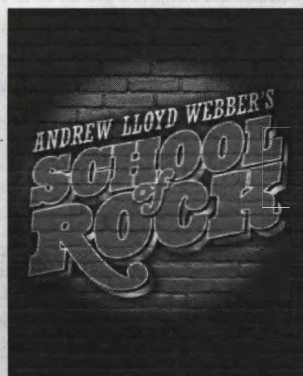


THE WIZARD OF OZ

May 15th – June 1st

YOUTH ON STAGE SCHOOL OF ROCK

July 17th – August 3rd



For more info call 631-298-4500 or email: boxoffice@nfct.com

It takes a community...



Dine-In • Take-Out • Catering

Local Fare, Italian Flair
- est. 2008 -

Located on Main Rd. in Mattituck,
just east of historic Love Lane

13550 Main Rd., Mattituck | 631.298.4800 | amanorestaurant.net



Twomey  Latham

SHEA, KELLEY, DUBIN & QUARTARARO, LLP

MaryKate Brigham, Esq.

Attorney at Law

631.727.2180 x309 mbrigham@suffolkclaw.com

56340 Main Rd., Southold, NY 11971

33 West Second St., P.O. Box 9398, Riverhead, NY 11901



Fine Art Photography for Home and Office



Anthony F. Graziano

www.agrazianophoto.com

tony@agrazianophoto.com

(516) 236-0589

FB: @agrazphoto; IG: @agrazianophoto

NFCT SHOWS

(M=Musical YM=Youth Musical)

1957
The Man Who Came to Dinner

1958 - 1959
Harvey
Bus Stop
A Visit to a Small Planet
Romanoff and Juliet

1959 - 1962
Night Must Fall
Born Yesterday
The Glass Menagerie
Guys and Dolls (M)

1962 - 1963
The Happy Time
The Hasty Heart
Petticoat Fever
Critic's Choice
Damn Yankees (M)

1963 - 1964
Mousetrap
Separate Tables
The Crucible
The Pajama Game (M)

1964 - 1965
Kiss Me Kate (M)
Blithe Spirit
The Peanut Butter Prince
(an original musical
written for the NFCT)
The Potting Shed

1965 - 1966
Mary, Mary
Save Me a Place at Forest Lawn
The Browning Version
Call Me Madam (M)

1966 - 1967
There Comes a Time (M)
Write Me a Murder
My Three Angels

1968 - 1969
Bell, Book and Candle
The Absence of a Cello
The Peanut Butter Prince (M)
She Loves Me (M)

1969 - 1970
The Little Foxes
Jack in the Box (M)
The Thurbur Carnival
Little Moon of Alban
The Odd Couple
Bells Are Ringing (M)

1970 - 1971
The Haunting of Hill House
Auntie Mame
Man of La Mancha (M)
The Music Man (YM)

1971 - 1972
The Price
Wait Until Dark
See How They Run
Finian's Rainbow (M)
South Pacific (YM)

1972 - 1973
Spoon River anthology
Who's Afraid of Virginia Woolf?
Summer and Smoke
Carnival (M)
Anything Goes (YM)

1973 - 1974
A Thousand Clowns
The Effect of Gamma Rays on
Man-in-the-Moon Marigolds
Cabaret (M)
Funny Girl (YM)

1974 - 1975
40 Karats
The Lion in Winter
A Ms. By Any Other Name
Kismet (M)
Guys and Dolls (YM)

1975 - 1976
Bertha the Beautiful Typewriter Girl
Dark of the Moon
Prelude
Of Thee I Sing (M)
Brigadoon (YM)

1976 - 1977
Arsenic and Old Lace
The Night of January 16th
Finishing Touches
The Country Girl
Fiddler on the Roof (M)
L'il Abner (YM)

1977 - 1978
Desk Set
A Man for All Seasons
Angel Street
Calamity Jane (M)
Dames at Sea (YM)

1978 - 1979
Inherit the Wind
The Last of the Red-Hot Lovers
A Clearing in the Woods
The Pirates of Penzance (M)
Little Mary Sunshine (YM)

1979 - 1980
The Rope Dancers
Come Blow Your Horn
Anatomy of a Murder
Godspell (M)
Once Upon a Mattress (YM)

1980 - 1981
6 Rms Riv Vu
Three For Gin
Butterflies Are Free
Applause (M)
The Boy Friend (YM)

1981 - 1982
The Fantasticks (M)
Tea House of the August Moon
Desperate Hours
The Peanut Butter Prince (M)
Anything Goes (YM)

1982 - 1983*
Frankenstein
Da
Chapter Two
A Funny Thing Happened on
the Way to the Forum (M)
Henry, Sweet Henry (YM)

1983 - 1984
Barefoot in the Park
Deathtrap
Blithe Spirit
Company (M)
Oklahoma! (YM)

1984 - 1985
Never Too Late
On Golden Pond
Night Watch
Gypsy (M)
Babes in Arms (YM)

1985 - 1986
Dracula
Harvey
Tea and Sympathy
The Sound of Music (M)
The Music Man (YM)

1986 - 1987
Plaza Suite
Our Town
The Miracle Worker
Mame (M)
Bells Are Ringing (YM)

1987 - 1988
You Can't Take it With You
Kind Lady
Don't Drink the Water
Kiss Me Kate (M)
Grease (YM)

1988 - 1989
The House on the Cliff
The Philadelphia Story
Stalag 17
Promises, Promises (M)
Beauty and the Beast (YM)

1989 - 1990
A Streetcar Named Desire
Witness For the Prosecution
Light Up the Sky
Oliver (M)
South Pacific (YM)

1990 - 1991
The Crucible
Bus Stop
Mr. Roberts
Sweet Charity (M)
West Side Story (YM)

1991 - 1992
Sweet Bird of Youth
The Rainmaker
The King and I (M)
The Best Man
Joseph and the Amazing
Technicolor Dreamcoat (YM)

1992 - 1993
The Nerd
Tribute
Hello, Dolly! (M)
A Few Good Men
Deadwood Dick (YM)

NFCT SHOWS

(M=Musical YM=Youth Musical)

1993 - 1994

Speaking of Murder
The Madwoman of Chaillost
Carousel (M)
The Man Who Came to Dinner
Leader of the Pack (YM)

1994 - 1995

A Man For All Seasons
Fools
A Tree Grows in Brooklyn (M)
The Prime of Miss Jean Brodie
Good News (YM)

1995 - 1996

Morning's at Seven
A Doll's House
Lost in Yonkers
Where's Charley (M)
Guys and Dolls (YM)
Bell, Book and Candle

1996 - 1997

Picnic
Brighton Beach Memoirs
Nonsense (M)
Into the Woods (YM)

1997- 1998

The Caine Mutiny Court Martial
Lettice and Lovage
Broadway Bound
Breaking Legs
Bye, Bye Birdie (YM)

1998 - 1999

Early One Evening at
the Rainbow Bar and Grill
The Farndale Avenue
Housing Estates Murder Mystery
Sweeney Todd (M)
A Chorus Line (YM)

1999 - 2000

The Chalk Garden
Born Yesterday
The Diary of Anne Frank
Jerry's Girls (M)
Annie (YM)

2000 - 2001

Deathtrap
Biloxi Blues
Dancing at Lughnasa
She Loves Me (M)
Damn Yankees (YM)

2001 - 2002

To Gillian on Her
37th Birthday
Rumors
No Way to Treat a Lady (M)
Ten Little Indians
Brigadoon (YM)

2002 - 2003

Wait Until Dark
Lend Me a Tenor
I Hate Hamlet
You're a Good Man
Charlie Brown (M)
Little Shop of Horrors (YM)

2003 - 2004

A Play on Words
(Eccleynary and
selections from All in the Timing)
Love Letters
Nude With Violin
Cinderella (YM)

2004 - 2005

The Foreigner
The Price
Man of La Mancha (M)
The Pajama Game (YM)

2005 - 2006

The Dining Room
The Glass Menagerie
Godspell (M)
Fiddler on the Roof (YM)

2006 - 2007

Crimes of the Heart
Lunch Hour
My Fair Lady (M)
Once Upon a Mattress (YM)

2007 - 2008

Our 50th Season
The Fantasticks (M)
Nonsense (M)
Gypsy (M)
Babes in Arms (YM)

2008 - 2009

Proof
Labor Day
Sound of Music (M)
Guys and Dolls (YM)

2009-2010

Rabbit Hole
Arsenic and Old Lace
Anything Goes (M)
110 in the Shade (M)
Kiss Me Kate (YM)

2010-2011

Dead Man's Cell Phone
Three Sisters
25th Annual Putnam
County Spelling Bee (M)
Oklahoma (M)
Footloose (YM)

2011-2012

Harvey
Doubt
How To Succeed In Business
Without Really Trying (M)
The King and I (M)
South Pacific (YM)

2012-2013

Night Mother
Golden Pond
Joe's Coat (M)
Carousel (M)
Legally Blonde (YM)

2013-2014

I Love You, You're Perfect,
Now Change (M)
Steel Magnolias
One Flew Over the Cuckoo's Nest
Into The Woods (M)
The Wedding Singer (YM)

2014-2015

The Boy Friend (M)
It's a Wonderful Life
Moon Over Buffalo
Over the River
and Through the Woods
Camelot (M)
All Shook Up (YM)

2015-2016

Little Shop of Horrors (M)
It's a Wonderful Life
Who's Afraid of Virginia Woolf
Becky's New Car
Dirty Rotten Scoundrels (M)
Urinetown (YM)

2016-2017

First Date (M)
Almost, Maine
The Female of the Species
Cabaret (M)
Thoroughly Modern Millie (YM)

2017-2018

Young Frankenstein (M)
Next to Normal (M)
You're a Good Man, Charlie Brown (M)
Oliver! (M)
Seussical! (YM)

2018-2019

Dr. Jekyll and Mr. Hyde
Monster Soup
The Santaland Diaries
The Drowsy Chaperone (M)
Pippin (YM)

2019-2020

Little Women (M)
Picasso at the Lapine Agile
Wolf Hall
Youth on Stage 50th
Anniversary Celebration

2020-2021

Clue
YOS Showcases

2021-2022

Outside Mullingar
Holiday Survival Guide:
A Musical Revue
The Laramie Project
The Producers (M)
RENT (YM)

2022-2023

Cry Baby The Musical (M)
One Christmas Eve at Evergreen Mall
Ripcord
The Resistible Rise of Arturo Ui
Sunday in the Park with George (M)
9 to 5 The Musical (YM)

2023-2024

A Catered Affair
The Dance Mechanics (M)
Wonder of the World
The Father
Follies (M)
Rodger's & Hammerstein's Cinderella (YM)

EASTERN LONG ISLAND HOSPITAL FOUNDATION

2025 CARE CAMPAIGN

At Stony Brook Eastern Long Island Hospital (SBELIH) and the ELIH Foundation, we take pride in the exceptional care we provide to the community. Our hospital remains a critical resource, offering a broad range of medical, psychiatric, and diagnostic services to meet the needs of the North Fork and beyond.

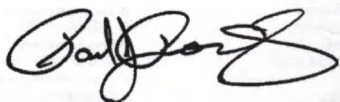
This year, we ask for your support in our Annual Appeal. Your donations help fund essential projects, purchase advanced medical equipment, and provide critical care to our patients.

Our top priority is establishing a Primary Stroke Center, a vital service for our community. Stroke is the leading cause of serious long-term disability, and quick access to specialized care greatly improves recovery. We aim to raise \$1.5 million to bring this life-saving service to SBELIH.

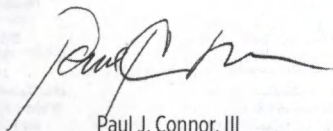
We invite you to make a tax-deductible donation. Every gift, no matter the size, directly supports our hospital and ensures we continue providing top-level care to those in need.

Thank you for your generosity and for helping make a lasting impact on the health of our community. Together, we can make a difference.

With deepest gratitude,



Paul Romanelli
Chairman



Paul J. Connor, III
Chief Administrative Officer



DONATE TODAY

CALL 631-477-5164

VISIT our website at ELIHFUNDATION.ORG

SCAN the QR Code

ORLOWSKI TRUE VALUE

True Value.



Richard Orlowski

Tel. 631.298.8420

Fax 631.298.2127

320 Love Lane Mattituck, N.Y. 11952

Email: richorlowski@hotmail.com

Thank you NFCT for another wonderful
season enriching our community.



Dr. Allen Fein and Bev Davies



Blue Collar Ballroom

Where Steel-toe meets Heel-toe

Alexandra M. Binder

631-525-7393

alexandrabinder@gmail.com

LEARN TO DANCE!

Local Certified Ballroom & Latin Dance Instructor

Private Lessons & Group Classes Available

Social Dancing & Wedding Prep

Follow on Facebook & Instagram

@bluecollarballroom

MENTION THIS AD FOR A SPECIAL DISCOUNT

HAVE WINDOWS FACING THE SUN?



GETTING TOO HOT IN THE SUMMER TIME?

GETTING COLD IN THE WINTER TIME?

WE HAVE THE SOLUTION! CALL US!

ENERGY SAVING SHADES

☎ 718-760-7603



Homemade Breakfast & Lunch
Bakery • Desserts
Espresso Bar • Catering

*proud to be part of
our community since 1994*

hamptoncoffeecompany.com



The Country Corner Cafe

55765 Main Road
Southold, NY 11971

631-765-6766

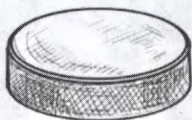
Breakfast, Lunch, Dinner & 28 Flavor Ice Cream Parlor

info@countrycornersouthold.com



the
**Village
Cheese Shop**

FINE FOODS & PROVISIONS



Mattituck, New York
631.298.8556
thevillagecheeseshop.com

"Best of the Best" by Dan's Paper



SERVING SHOWSTOPPING DESSERTS AND
HOMECOOKED MEALS IN OUR VINTAGE DINER
EVERY DAY 'TIL 3 PM.

**THE
CUTCHOGUE**  **DINER**
The North Fork Landmark

ON THE MAIN ROAD CUTCHOGUEDINER.COM

HELPING BUILD A
BETTER COMMUNITY

FROM **FRAME** ^{TO} **FINISH**



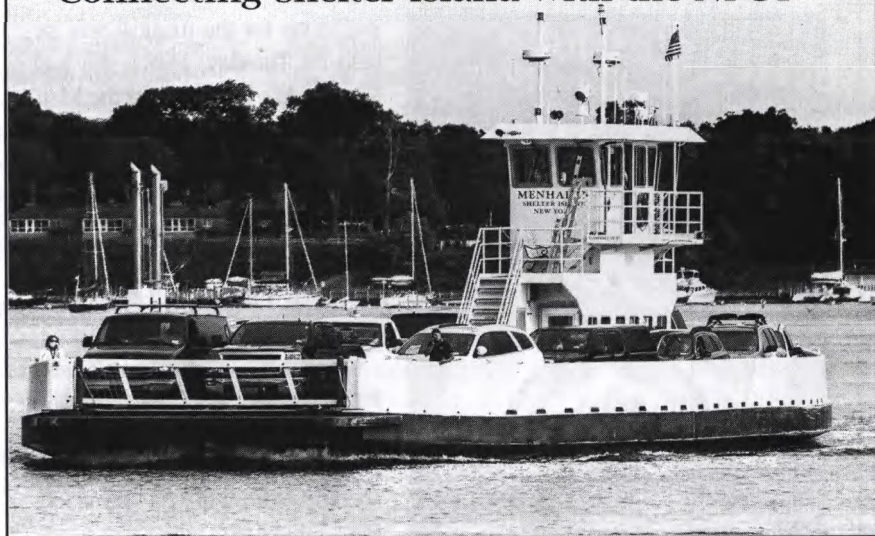
Riverhead Building Supply is a Proud Sponsor of
The North Fork Community Theatre

 **RIVERHEAD®**
BUILDING SUPPLY

rbscorp.com • 800-378-3650

North Ferry

Connecting Shelter Island with the NFCT



kolb

HEATING + COOLING

- All Traditional & Modern Green Systems
- Maintenance & 24 Hour Emergency Service
- Serving the East End for over 30 years
- Residential & Commercial
- Installations & Repairs

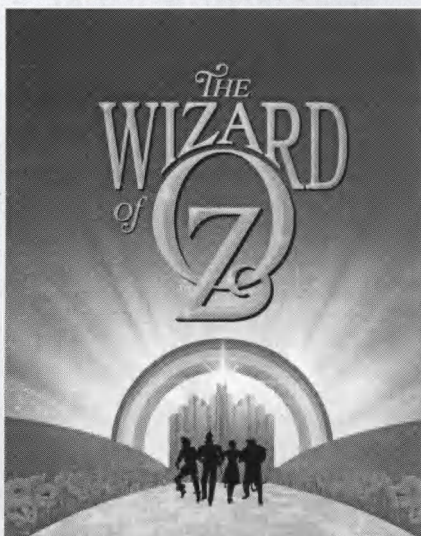


(631) 298-5527 www.kolbmechanical.com

North Fork | South Fork | Shelter Island

NFCT AUDITIONS

The Wizard of Oz

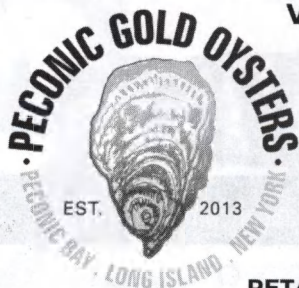


Auditions for the musical will be held on Tuesday, March 4th and Wednesday, March 5th at the Matituck Presbyterian Church at the intersection of Old Sound Avenue, Love Lane, and Rt. 25. Auditions for youth ages 8 through 15 will be at 5:30PM; auditions for ages 16 through adults will be held at 7PM.

Please bring sheet music for a Broadway Style song to sing for no longer than 3 minutes; an accompanist will be provided. Please make sure your sheet music

is in the correct key for you. For young auditioners, we recommend singing "Over the Rainbow" for which you will not need to bring sheet music. Please direct questions about audition music to the Music Director, Dina Mondello at dinamondellomusic@gmail.com.

Wear comfortable clothing for movement and/or dance auditions. Callbacks will be held on Thursday, March 6th. In person auditions are preferred but if you are unable to attend in person, an exception may be made by the director to allow a video audition. For more information, please contact the Director, Mary Motto Kalich at 917-334-6639 or marymotto@yahoo.com.



Visit Our Farmstand - Open Daily

21125 County Road 48, Cutchogue

Captain Matt Ketcham

631.495.7061

peconicgoldoysters.com

@peconicgoldoysters



RETAIL - WHOLESALE - EVENTS - CONSULTING

Thank You To Our Donors

Building on Tradition - CHAIRMAN

Phyllis and John Conley
Michael and Emilie Corey
Mary and Nathan Kalich+*
Anonymous
Richard Manfredi
Wilbur Osler
Barbara Reiter, Aeroflex
Foundation
Suffolk County

Building on Tradition - GOLD

The Daniel Rosenblatt
Foundation*

Building on Tradition - SILVER

Peter & Erica Harold*
Ina and Craig Hasday*
North Fork Side By Side
Michael Hipp
and Kimet Speed+
Thornton and Sherry Smith*
Marian S. Wood Trust

1% Club

Deanna Andes
and Clothesline
Productions
Anonymous
Stanley
and Margaret Brown+*
Phyllis and John Conley
Helen Duryea*
Carin and Joseph Francica
and The San Diego
Foundation
Connie Latson+
Katrina and John Lovett

Metabolic Studio
PBMC Foundation
Charles and Marilee Scheer+
John Touhey and Patricia Lowry*
Carol & Martin Walicki
Pat Wall+*

ANGELS

Emily and Jack Breese
and The Seattle Foundation+
Esther H. Hunt*
Anonymous
Richard and Patricia Lark+*
Gary and Grace Lukachinski
Mattituck Lions Club
The Moore
Charitable Foundation
Nancy Reeve*
Arthur Satz
Joe and Mary Ann Sieczka+
Simmons Point Group of Janney
Montgomer Scott LLC
John Touhey and Patricia Lowry
Patricia Ward+
Gene and Mary Yourch

BENEFACTORS

Susan and Leif Ahrens+*
William Albertson+
Mr. and Mrs. George Aldcroft+*
Patty Allen
Eugene W. Boehringer
Charitable Trust, in memory
of Diana Boehringer
Jay Cardwell
Lynda Circo
Craig and Alisa Clark*
Mary Lou Folts*
Edgar and Nancy Goodale
Georgianne and Douglas Gregg
Rod and Georgia Griffiths*

Charles Hedberg
George Ince*
Doreen and Donald Kirby
Kolb Mechanical*
Kathy McMahon and the
George T. and Ruth C. Laboda
Foundation
Terry and Marion Latham*
Keith and Barbara Lewin*
Ann Mallouk
Anthony Matson, in remembrance
of Richard Sullivan
Andrew and Mary Mitchell
Virginia Motto*
Stacey and Dale Moyer*
Stephen and Judith Ness
Maria O'Connor
Joanna Paulsen,
in Memory of Jed Clauss *
Laura and Jim Pearsall*
Laurie and John Phelan*
James and Cheryl Reeve
Dr. and Mrs. Richards,
In Tribute to Judy Utter+
Riverhead Building Supply
Bruce Rothstein*
Gwendolyn and Jim Sartoris, in
memory of Barbara Reiter*
David and Michele Scheer
Alfred Scherzer
Liz Sieczka *
Fred and Nancy Smith
Mr. and Mrs. Raymond Terry+
Kate Thomes, in memory of
Russell F. Thomes, Jr.
The Ellen M Violet
and Mary PR Thomas
Foundation
Nancy Gilbert and Richard Wines

All donation levels are cumulative for the **Building on Tradition** Campaign.

+ Cornerstone Donors

* Indicates that a donation has been made since September 1, 2024.

For donation levels under \$1000, only those who have donated since September 1, 2024 are listed.

Thank You To Our Donors

PRODUCERS

Barbara Ackerman, in memory
of Joseph B. Sieczka
Kenneth E. Ackley+
Anonymous*
Gayle and Julie Alexander, in
honor of David Markel
Jeffrey Andrade
Gerald Appelstein
Eunice Armbrust
Diana Bartunek*
Martine and Peter Baschnonga
William Beardslee*
Evelyn Bergen+
Dorothy M. Berks
David Boffill
Helen Brann
Mr. and Mrs. Franklin Brehmer
Capital One Bank
Linda Rie Cohen Fund for
Arts and North Fork Reform
Synagogue
Cook, Hall & Hyde, Inc.
JeanMarie Costello,
in Memory of Dennis Quinn
Margaret Ann Cowden and
Christina Larkin, in memory
of Jeff Cowden
Cutchogue Diner
Nancy and Francis Deegan+
James and Mary Ellen Duffy
Joel and Phyllis Ehrlich
Anne B. Farrell
Thomas Fischer+
Mr. and Mrs. David Fisher
Janice Flaherty
Ellie and Joe Friedman
Larry and Arline Galasso
Bill Gardner*
Walter and Marilyn Gatz+

Michael Geraci
Sophia Gutherz*
Cast of Gypsy
George, Lisa and Ghana Haase*
Joseph and Christine Haeg+
Harbes Family
Ora and Bruce Heath
Maureen Nelsen
and William Hipp
Richard and Pat Hom*
Paul Jeselsohn and Francis Dubois*
Julie Lane*
Jim Latham
Edwina G. Latson
Elizabeth Liszanckie*
John and Patricia Lockwood+
Leslie Luxemburg
Gerri Macwhinnie*
Gail Madden
Michael Manuelian
and Gregory Welch+
Maria and Mark Manzi
Jeanne M. Markel
and Chris Wedge+
Dee and Willy Martin+
Marie and Eddie McDonald+*
John E. McGreevy
Frederick Meltzer
Mike Geraci
Ruth Miller*
Richard Mizdal
Jan Nicholson
North Fork Drywall & Insulation
Richard and Patricia O'Brien*
Marne Olsen,
In memory of Evelyn Bergen
George Philippides*
Joe Pufahl
The Rempel Family+
REVCO

Laurie and Erwin Rodger
Bruce Rothstein
Stanley Rubin+
Daniel and Marissa Russo,
In Memory of Cathy Russo
Bill and Maureen Sanok+
Michael Sciarrino
Patricia Shillingburg
Edward and Carol Sieban,
In memory of Joe and
Mary Ann Sieczka from
their Children
Laurel Sisson*
Mark and Lauren Sisson
Jay and Joanne Slotkin,
in honor of Jed Clauss
Susan and Robert Somerville
Marjory Stevens,
in Memory of Judy Utter
Cora Stoll
Lawrence Strickland
Raymond Terry
Ellen Violet
and Mary Thomas
Dr. Arnold
and Liselotte Urist
Mary and Jim Vines+
Lillian M. Wagner-Dykhuys+
Stuart and Anne Whalen*
Carol Witschieben*

DIRECTORS

The Beodeker Family+
Howard and Judy
Brandenstein*
Terry Brockbank*
Rich Caggiano and Family*
Phil and Marilyn Centonze*
Marilyn White Corwin+
Maureen Deegan+*

All donation levels are cumulative for the *Building on Tradition* Campaign.

+ Cornerstone Donors

* Indicates that a donation has been made since September 1, 2024.

For donation levels under \$1000, only those who have donated since September 1, 2024 are listed.

Thank You To Our Donors

Elizabeth A. Geyer+
 Michael Greenstein*
 Marion and John Harrison+
 Otto and Ruth Kirschner+
 Joey and Dave+
 Genevieve McGrath*
 Glen McNab*
 The Quinn Family+
 Richard and
 Margaret Rutkowski*
 Michelle Roussan*
 Eileen Sheldon+
 Judith and Jay Spates*
 Alicia Thompson+
 Eric Wechsler*

STARS

Susan and Rich Caggiano*
 Acting Out Loud,
 in Memory of Todd Bibey+
 The Bowles Family
 in memory of Joseph B. Sieczka*
 A. Elaine Breese,
 in Memory of Syd Breese+
 Susan Denise Brown*
 Kim Cappiello*
 Kurt Carstensen+
 Mrs & Mrs Allan Connell,
 in memory of Joseph B. Sieczka*
 Paula and Michael Croteau+
 Heather Cusack+
 Carol Deuel*
 Cathy, Wayne and Amy Dries+
 The Gilvarry Family+*
 Gramercy Vineyards+
 Tanya Gullep and Sarkis Ohanian*
 Laura Hebenstreit*
 Anderson Speed Hipp+
 Paul and Monica Jacques*

Raven Janoski+
 Joseph and Catherine Keiser+
 John and Patrice Keitt+
 David and Carol Kirby+
 Larry and Flo Liso+
 Mary Ann and Joseph Martorano+
 Thomas Meaney*
 Angela Monsell+
 Terrance and Irene Nolan*
 CJ's American Grill*
 Riverhead Faculty
 and Community Theatre+
 Susannah Rosato, in Memory
 of Dorothy F. Kimball+
 Vernon and Patricia Scates,
 in memory of Patricia Hipp*
 Ron and Conny Shapiro*
 Jim and Joan Sheehan+
 The Sisson Family+
 Joseph J. Snellenburg II+
 Mr. and Mrs. John Stack+
 Polly Ketcham Thurm+
 Jeff Wentz+

FEATURED PERFORMERS

Mabel Hubbard*
 Iris Burckhardt*
 James and Lorretta Buscemi*
 Susan Carlsen*
 Mr. and Mrs. Chet Chorzewa*
 Eugene and Bonnie Doyle*
 Carol Euring*
 Alice Levien*
 Linda Lynch*
 Brenda Momente*
 Matthew Orr and Amanda Barney*
 Maria Ruggeri*
 Frances Ruggiero-Miecznikowski*
 Mary & Ron Sanchez*
 Catherine Stimpson*

PLAYERS

Alan Daters*
 Robert DeVito*
 Caren Donovan*
 Florence Gajeski*
 Peter Ixotoyac*
 Danielle Johnson*
 East End Sporting Goods*
 Susan Palmer*
 Jana Saelzer*
 Susan Sommer*
 Ruth Werking*
 Deanna Witte-Walker*

ENSEMBLE

Caren Heacock*
 Joe O'Brian*

All donation levels are cumulative for the *Building on Tradition* Campaign.

+ Cornerstone Donors

* Indicates that a donation has been made since September 1, 2024.

For donation levels under \$1000, only those who have donated since September 1, 2024 are listed.

2024-2025 NFCT Membership

Scully Peretsman Foundation and Jessica Alfonsi	Jessie and Edward Hertling	Maureen Nelson
Mabel Hubbard	Jess Hertling	Stephen and Judith Ness
Becky Adams Korn	Michael Hipp	Jan Nicholson
Bernadette and George Aldcroft	Bonnie Hoffner	Tom Nimmo
Joseph Aloï and Tom Baney	Robert Horn	Steven Oakley
Erin Argo	Pat and Bridge Hunt	Richard O'Brien
Mitchell Berg	Monica and Paul Jacques	Gene and Andy O'Brien
Carol Brewer	Paul Jeselsohn	James Patton
Nina Callahan	Micky Kalich	& Ronald Pagano
Kim Capiello	Nate and Mary Kalich	Joanna Paulsen
Barbara Celeste	Cynthia and James Kaminsky	Laura and Jim Pearsall
Mr. and Mrs. Chet and Sue	Olga Kammerer	Laurie and John Phelan
Chorzempa	Dr. Philip and Regina Kenter	Debra Riva
Pete and Sandy Coleman	Jo Ann Kujawski	Mr. Thomas Roslak
Pamela Conlon	Richard F. and Patricia Lark	Elizabeth Ross
Helen Corso	Marion Latham	Lois Ross and Family
Margaret Ann Cowden	Christian Lepore	Michelle Roussan
Sally Crocker	Hal Levine	Theresia Sanchez
Margaret Cruise	Vivian Lindemann	Cara Schaary
Peggy and Mike Cruise	Elizabeth Liszanckie	Michelle & David Scheer
Nicholas Deegan	Barbara Lockman	Charlie & Marilee Scheer
Maureen Deegan	Bobbie Lockman	Maureen Sheldon
Linda DiOrio	John and Katrina Lovett	The Sisson Family
Susan and Dick Ehlers	Brian Mackey	Lauren and Mark Sisson
Miriam Farmakis	Gerri Macwhinnie & Family	Sherry Smith
Madeline Fazio	Christopher & Patricia McCarthy	Anne Smith
Nicole Fiedler	Genevieve McGrath	Sharon Twickler
Susan Krupski Fisher	Donald McGrath	Helen and Tom Tynan
Mary Lou Folts	David McKelvey	Judith Ugalde Cryan
Thomas Foulkes	Theresa Midulla	Scott and Patty Verity
Georgia Frohnhoefer	Mary Anne Midura	Sid Wanerman
Bill Gardner	Robert and Andrea Mohr	Bill Weresnick
Anne and Jim Gilvarry	Brenda & Eric Momente	Carol Witschleben
Lyn Goldstein & Christine Rendel	Connie & Vince Monteforte	
Sandra Gruner	Margaret Motto	
Carol Harte	Virginia Motto	
	Nancy Motto	

To renew your membership for 2024-2025 or to become a member, please see the back cover.



Peconic Bay
Medical Center
Northwell Health

AN EXTRAORDINARY COMMUNITY DESERVES EXTRAORDINARY CARE

AT NORTHWELL'S PECONIC BAY MEDICAL CENTER, WE'RE RAISING THE EXPECTATIONS ON WHAT YOUR COMMUNITY HOSPITAL CAN BE.

With some of the highest patient experience and clinical outcomes ratings in the region, we're now delivering top-rated interventional heart care, the most experienced orthopedic joint replacement team and a full range of women's health services and so much more to come.

Peconic Bay Medical Center brings the unmatched resources of Northwell Health right to your neighborhood.

Learn more at Northwell.edu/PBMC



Peconic Bay
Medical Center
Northwell™
RAISE HEALTH

BUILDING ON TRADITION CAMPAIGN

Thank you for your ongoing support of the Theatre. With your help, we are renovating our beloved theater. Our plan is to keep the building's historic charm, but make significant improvements to the theater to enable our patrons to better see, hear and experience live theater. The first phase of the renovations included an expanded stage, an orchestra pit, and modern lighting and rigging infrastructure. We recently upgraded our sound system to use wireless microphones and extended the stage over the pit orchestra. The next phase of the renovation will include upgrades to the auditorium and seats. Please consider making a donation at nfct.com or by using the form below.

DONATION LEVELS

BUILDING ON TRADITION COMMITTEE:

- ☐ CHAIRMAN\$50,000+
- ☐ GOLD MEMBER \$25,000-\$49,999
- ☐ SILVER MEMBER.....\$15,000-\$24,999

- ~~~~~
- ☐ 1% CLUB \$7500-\$14,999
- ~~~~~

- ☐ ANGELS\$5000-\$7499
- ☐ BENEFACTORS \$2500-\$4999
- ☐ PRODUCERS \$1000-\$2499
- ☐ DIRECTORS \$500-\$999
- ☐ STARS \$250-\$499
- ☐ FEATURED PERFORMERS.....\$100-\$249
- ☐ PLAYERS..... \$50-\$99
- ☐ ENSEMBLE \$25-\$49

Check below to become a member of NFCT.

- ☐ INDIVIDUAL MEMBERSHIP\$15

Membership for one year from July 1, 2024 - June 30, 2025

Name _____

Address _____

City/State/Zip _____

Phone _____ E-mail _____

Total Amount Enclosed _____

Mail To NFCT, PO BOX 86, MATTITUCK, NY 11952