

# Willmott's and Why-Not's

By David J. Willmott, Editor

## A Good Industry

An industry that carries a \$19,000,000 annual payroll, that employs several thousand people year-round and a few thousand more during its prime season is looking for a new home. It is one of the biggest growth industries in the nation. It is virtually depression-proof and will suffer no cutbacks due to war, national catastrophe or depression. This industry pays moderate to good salaries, employs mostly white collar workers and would not have any adverse effects upon our environment. We cannot find anything objectionable about this industry at all. Suffolk County owns over two thousand acres of prime land and is about to acquire buildings and facilities that could be very advantageous to this industry.

If you haven't guessed by now what we are talking about, the Internal Revenue Service is searching for a site in Suffolk to handle regional income tax returns. The site we have in mind is the Suffolk County Air Force Base.

Such an industry would be a natural for the base facility. The Internal Revenue Service is growing faster than any industry in the nation, including the arms industry, and they need room for expansion. They need someone to construct facilities for them. Suffolk can do it and lease them back at a fair rental. This rental and the employment would help the entire county.

The IRS facility could work in very well with other industries that might be attracted to the area if our county leaders act now. The competition is going to be fierce for this prime employer. Suffolk County has more to offer with the base and it should be hard at work selling its assets.

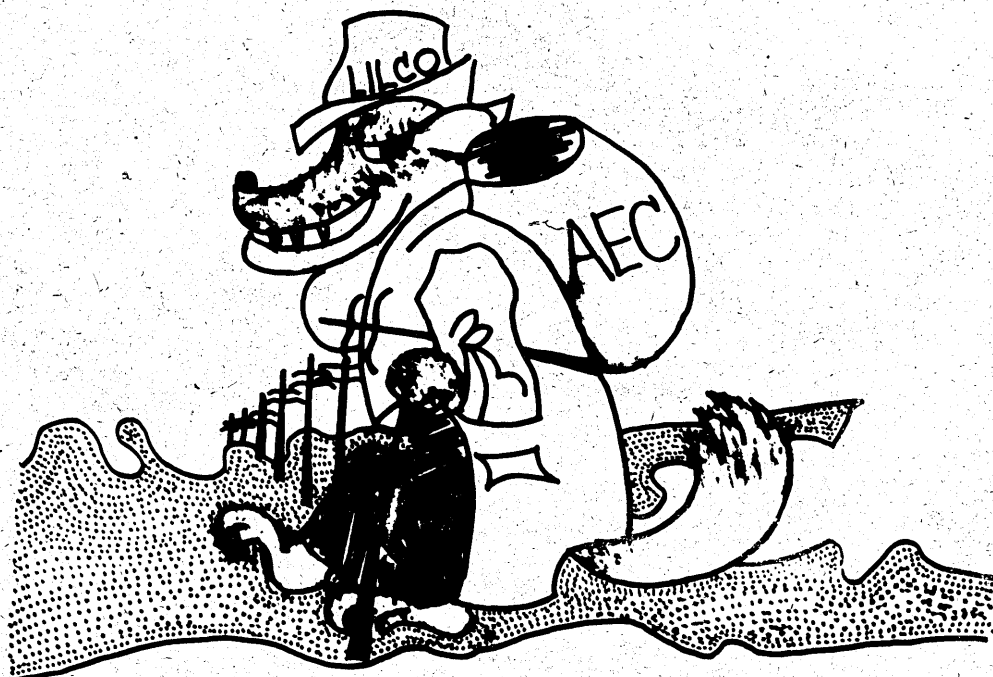
We hope to see the county board, and the respective committees, investigate the possibility of this proposal immediately. We urge all of our readers to contact their county legislators and get them moving on the situation. And why not?

## A Case of Confidence

We have all known situations where people become overconfident in anticipation of certain benefits. We say that they are "counting their chickens before they are hatched." We can illustrate a case in point out here on the east end.

In Shoreham, where LILCO hopes to build a nuclear generating plant, construction has already started before final approval has been granted by the Atomic Energy Commission. In fact, certain hearings have not even been held and won't be held until May 25th.

One has only to look at the desecration of the area to see the arrogant overconfidence of LILCO. Look at the super high voltage wires that have been installed out of the proposed plant site. Observe the construction work going on. They even appear to have already dug the



hole for their reactor. It is either a case of enormous confidence or they are mighty wild gamblers.

A group of concerned citizens, known as the Lloyd Harbor Study Group, is hoping to persuade the AEC to investigate the effects that this plant will have upon the environment. There is widespread suspicion and fear that a plant of this kind could have a disastrous effect upon the whole environment of the area. If an investigation bears out these fears, massive efforts will be undertaken to prevent LILCO from constructing its plant at this location.

It is the belief of this publication that the danger of atomic radiation is just as bad for the environment of an area as belching smokestacks or spewing sewer pipes. What good is an area if we can't enjoy it? Is it not just as unhealthy to live in fear as it is to breathe bad air or be subjected to radiation?

There are a couple of things that bother us immensely: One is that this magnificent natural area of eastern Long Island is being continually threatened by organizations who wish to construct facilities that have the enormous potential to pollute. The second is that we

cont. page 10



# SUFFOLK LIFE

Offices and Plant Located on Montauk Highway, Westhampton N.Y.

Mailing address: Box 262, Westhampton, N.Y. 11977 - or Box 167 Riverhead, N.Y. 11901

Total circulation audited and verified to be in excess of

**59,000 WEEKLY**

Published every Wednesday in five market area editions

Northern Brookhaven... 14,175 South Fork... 10,300

Southern Brookhaven... 13,390 North Fork... 7,165

Riverhead/Westhampton... 14,500

**David J. Willmott - Editor and Publisher**

**Sherman B. Chace - Advertising Manager**

**John McKay - Production Manager**

**Tim Stalker - News Editor**

Subscription Rate:

In Suffolk County ..... \$1.00 per year

Outside Suffolk County..... \$5.00 per year

News stand single copy sales..... 10¢ per issue

Controlled Circulation - Postage paid at Riverhead N.Y. 11901

\*\*\*\*\*

### GENERAL INFORMATION

**LETTERS TO THE EDITOR** - We encourage our readers to express their views regardless of opinion thru the Letters to the Editor column. All letters must be signed with author's signature and address. We will withhold names on request and assign a nom de plume.

**NEWS AND PHOTOGRAPHS** - Readers are welcome to submit ideas of interest and photographs for consideration of publication. All news and photographs become the property of Suffolk Life upon submittal and can not be returned for any reason.

**ERRORS** - Responsibility for errors in advertisements is limited to the value of the space occupied by the error.

EDITORIAL from page 3

are deeply disturbed and angered that any organization, whether it be industry or utility, has the unmitigated gall and audacity to proceed with construction of a plant before receiving the final approval

of the proper authorities. We are just a little bit tired of seeing our citizens pushed around by companies and government with the money and power to act as if they owned the world.

We hope that LILCO gets the message. And why not?

# "POLITICAL LIFE"

## Conservative Life

By John J. Siegmund

SUFFOLK CONSERVATIVE PARTY  
VICE-CHAIRMAN

Every time you start your car, cook a meal, hop in a jet plane or flip a light switch you add to the ecological imbalance on the planet Earth.

It is impossible to convert raw materials into useful products or into useable energy without disturbing the ecological balance one way or the other.

The stampede of politicians to get on the ecological bandwagon which, according to the pros is the great issue of the 70's, would be amusing were it not such a serious topic.

The politicians are joined by an assorted group of hippies, yuppies, kooks, New Left revolutionaries, as well as well-meaning citizens' groups and students. The hippies, yuppies and kooks are in it for the activity (since anti-Vietnam protests no longer make headlines), the New Left is in it to destroy private industry — and with it, our country. The citizens' groups and students are, for the most part, seeking workable solutions to very serious problems.

The solutions offered range all the way from the proposal that we return to the cave-man life style to

proposals for government control and (or) regulation of every industry.

If we were to return to the cave-man style we would soon find that the destruction of our environment would be even more extensive than now exists.

The 20th century cave-man would cook his meals on an open flame, (burning down a few forests in the process), use wood broken from trees, (thereby adding to nature's inability to purify our air), get his water from a stream (if his upstream neighbor is cooperative). It would be interesting, but self-defeating.

The opposite extreme is strongly advocated by the New Left and foggy-headed liberals. What is proposed is, in general, technically possible, but economically unfeasible and impractical. As an example, the federal government has imposed strict anti-pollution controls effective for 1975 vehicles. Leftists are clamoring to make this effective in 1972. The automotive industry can develop a workable, economical solution for the 1975 vehicles but it would be impossible for an economical solution to be developed by 1972. If the 1972 target date is enforced the cost of vehicles will rise greatly. The consequent loss in sales and unemployment would further impair our economy's ability to effectively combat other environmental problems.

While I do not feel we should advocate that everyone sit back and wait for someone else to solve the problems of protecting our environment, I do feel that such problems should be approached with a view towards determining how these so-called solutions will affect our economy and what losses of personal

freedom we must suffer to accomplish our goals.

### Suffolk's Mistake

Here in Suffolk County we have the perfect example of what happens when the public is taken in by politicians and political appointees who are left to run amok. The Southwest Sewer District in western Suffolk County was foisted upon the public, who voted it thru in a referendum after they were inundated in the newspapers and on radio by a Madison Avenue campaign telling them that calamity was rapidly approaching. Ironically the terror campaign of the Sewer Agency was financed by the voters themselves. Even more ironic is the fact that sewers are not even necessary.

The only solution to our predicament is a cautious weighing of the costs and then working out realistic compromises. This is impossible in the present state of conservation hysteria.

Surely our children should be able to walk in the forest. Let them walk as free people.

## Democratic Life

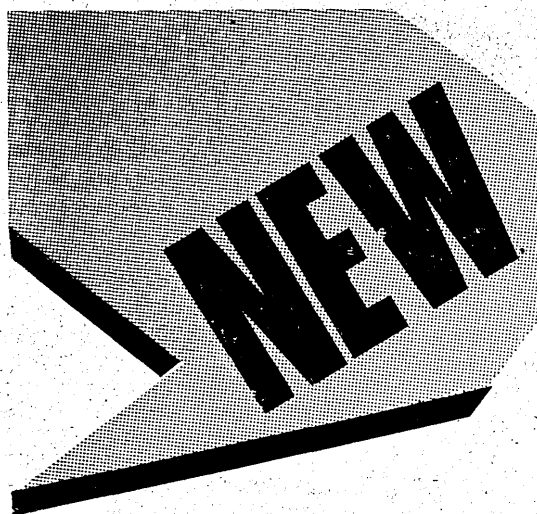
By Dominic J. Baranello

SUFFOLK COUNTY DEMOCRATIC  
COMMITTEE CHAIRMAN



In our first column we promised continuing reports on the work of the Democratic Legislative Activities (DLAC). It will take us several issues just to give a

cont. page 15



from **PANASONIC**



## CUSTOM "IN THE DASH" 8 TRACK STEREO

"CUSTOMISED TO BECOME A COMPONENT PART OF ANY MAKE CAR"

*Make Your Car Sound Like Front Row Center Carnegie Hall*

Stereo player converts to AM/FM Stereo radio with Panasonic radio pack

8 Track Stereo Player converts to play 4 track Cassettes with Panasonic Cassette Pack

Custom instrumentation makes theft next to impossible. Plus adds beauty to your car.

**It makes sense - safety & versatility & beauty & SOUND PERSONIFIED at reasonable cost**

WE HAVE A STEREO SYSTEM TO FIT EVERY BUDGET AND NEED. INSTALLATION ON PREMISES FINANCING ARRANGED

**PENN STEREO**  
222 WEST MAIN STREET, RIVERHEAD



**Willmott's and Why-Not's**  
 By David J. Willmott, Editor

### Do Your Thing

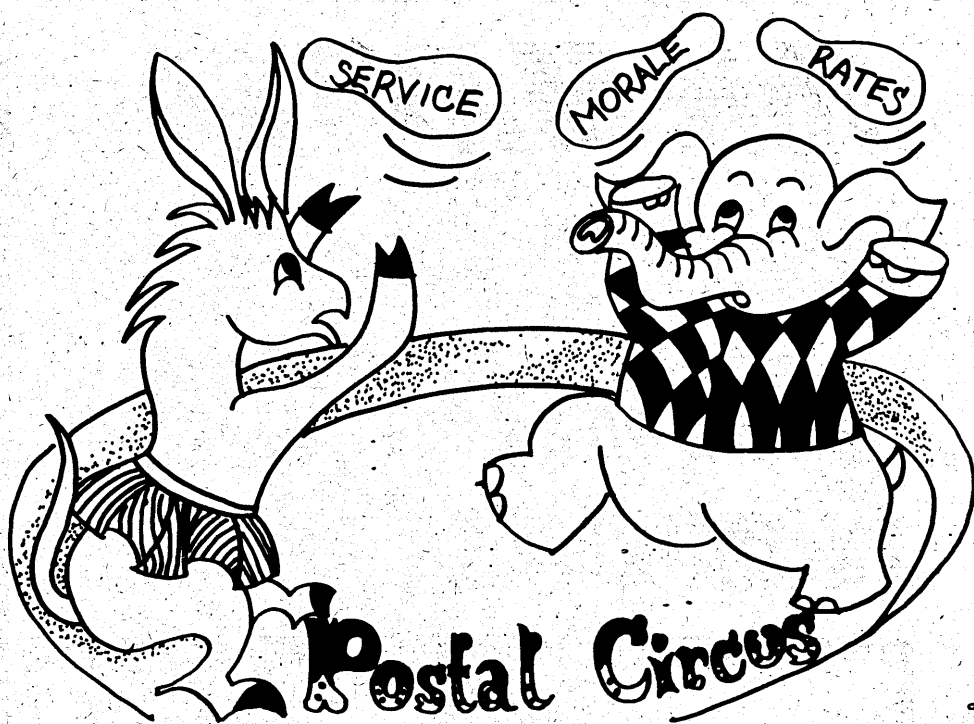
OK, so we are all of a sudden concerned with our environment. We find it excellent copy and good conversation over coffee or a couple of beers. It is easy to lay the blame for pollution at the door of big business, but let's look at the situation realistically. We are all to blame - individually and collectively. Each and every one of us contributes to the degradation of our area. Every time we toss away a cigarette butt or candy wrapper; every time we use a detergent; every time we fill our automobile gas tanks with leaded gasoline we are contributing to the pollution of our land, our ground water and our atmosphere. We clutter, litter and pollute every day - each and every one of us. We buy non-returnable soda and beer containers because we are too lazy to carry them back into the store when they are used up. The cost of disposing of just beverage containers in this country is estimated at over one-hundred million dollars a year. Housewives pour thousands of tons of hard detergent into the ground every day thus adding to the ground water pollution. If every housewife would switch to a biodegradable for her wash, there would no longer be a water pollution problem on Long Island. Unfortunately, the power of advertising has persuaded our homemakers that their washes will be whiter and brighter only if they use the water polluters. We ask you to take note of the above and then to do YOUR thing to help prevent the pollution of your environment. We will have fewer problems out here and a much nicer area to live in. The following steps are suggested:

1. Buy beverages only in returnable containers. If your brand is only marketed in "no return" containers, switch brands. The manufacturer will get the point in a hurry if enough people switch brands. By the way, it is cheaper to buy returnable beverages so you'll be accomplishing two things, less pollution and less erosion of the budget dollar.
2. Stop using detergents entirely. Use soap or one of the biodegradables which break down after entering the ground. Many of these products are cheaper than the heavily advertised detergents and they do just as good a job when used as directed. You will also save by not having to get your septic tank cleaned as often (if you have one).
3. Use ash trays, litter baskets and take your trash to the nearest dump. Try to get in the habit of picking up trash even if it isn't yours. Think of the tremendous cumulative effect if everyone did just a small part in picking up.

Let's all do our own thing to keep our area clean, our water pure and our air unpolluted. And why not?

### Rates and Reform

Since taking office, President Nixon has been pushing for postal reform. He wants the Post Office operated in a non-political and businesslike manner. It has been the cry of government that the postal service be operated on a pay-as-you-go basis. It should be self-sustaining. We agree, but let's make sure that in so doing it is not burdened with having to operate as a



political subdivision. These subdivisions of government have a way of running without using sound business practices.

If the Post Office can be run independently of politics, free of burdensome and wasteful governmental procedures, then it should be run on a pay-as-you-go basis with no concessions given to anyone on rates. Realistic rates must be set for every class of mail depending on their actual call on service within the postal department.

Under the Cost Ascertainment Figures, just released by the Post Office, for 1969, a percent basis of 200 percent is used as the point at which classes of mail are breaking even. Here are the figures so that you can see which classes of mail are paying for themselves and which are deficient.

First Class - 185 percent; Air Mail - 130 percent; 2nd Class - 41 percent; 3rd Class including non-profit - 170 percent; 3rd Class bulk - 198 percent; Controlled Circulation (Suffolk Life Category) - 215 percent.

If you will note, the class of mail which Suffolk Life falls into is paying the Post Office a profit of 15 percent. In 1970 our rates were increased in the third and final phase of a 280 percent rate increase. If this increase

cont. page 4



## SUFFOLK LIFE

Offices and Plant Located on Montauk Highway, Westhampton N.Y.

Mailing address: Box 262, Westhampton, N.Y. 11977 - or Box 167 Riverhead, N.Y. 11901

Total circulation audited and verified to be in excess of

**59,000 WEEKLY**

Published every Wednesday in five market area editions  
 Northern Brookhaven... 14,175 South Fork... 10,300  
 Southern Brookhaven... 13,390 North Fork... 7,165  
 Riverhead/Westhampton... 14,500

David J. Willmott - Editor and Publisher  
 Sherman B. Chace - Advertising Manager  
 John McKay - Production Manager  
 Tim Stalker - News Editor

Subscription Rate:  
 In Suffolk County ..... \$1.00 per year  
 Outside Suffolk County..... \$5.00 per year  
 News stand single copy sales ..... 10¢ per issue

Controlled Circulation - Postage paid at Riverhead N.Y. 11901  
 \*\*\*\*\*

#### GENERAL INFORMATION

LETTERS TO THE EDITOR - We encourage our readers to express their views regardless of opinion thru the Letters to the Editor column. All letters must be signed with author's signature and address. We will withhold names on request and assign a nom-de plume.

NEWS AND PHOTOGRAPHS - Readers are welcome to submit ideas of interest and photographs for consideration of publication. All news and photographs become the property of Suffolk Life upon submittal and can not be returned for any reason.

ERRORS - Responsibility for errors in advertisements is limited to the value of the space occupied by the error.

# Weekend heating systems

or year round for that matter...

Pyrofax has a system to heat your cottage, for just taking the chill off, or for providing warmth on the coldest winter days.

We welcome summer visitors business. No job is too small to receive our fullest attention.



## Heating systems that do the job - from under \$100

CALL FOR FREE ESTIMATE ON SERVICE HOOK UP  
NOW - ENJOY THE SUMMER

# PYROFAX GAS

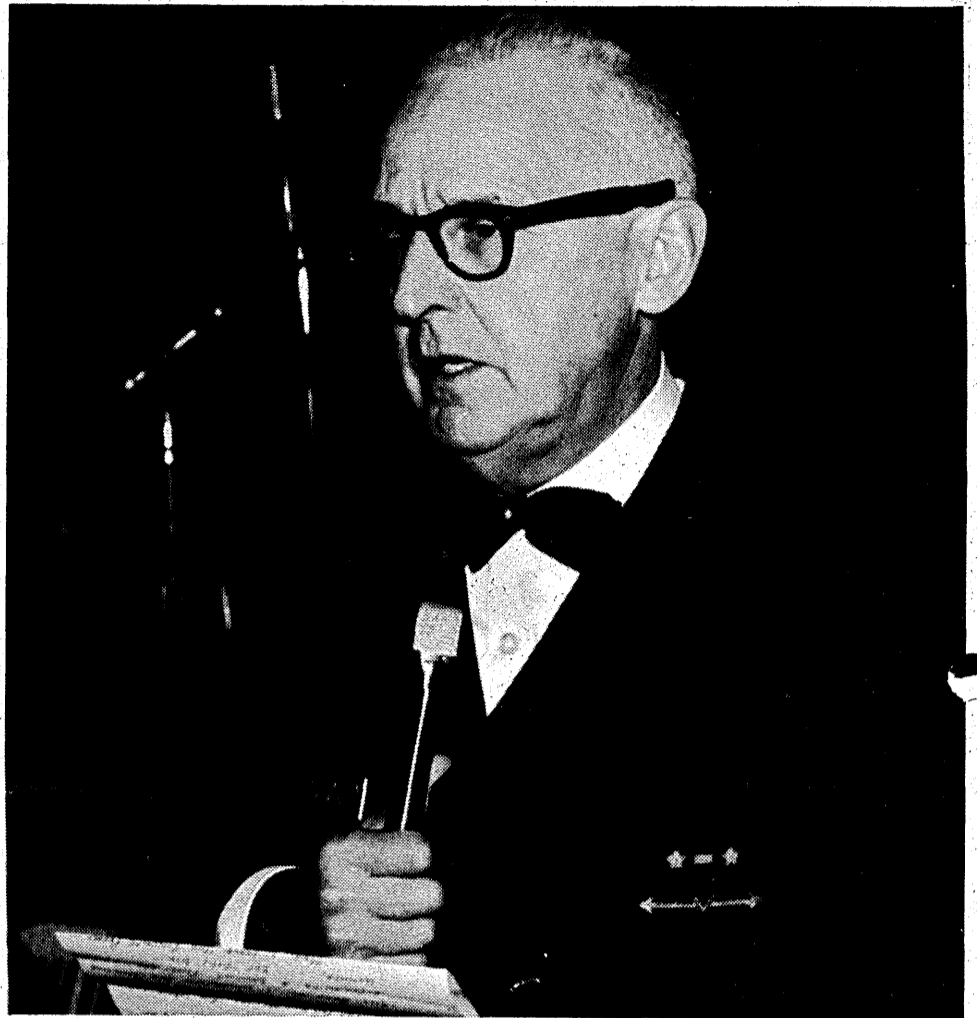
WEST MAIN ST.

RIVERHEAD

727-2626

## Peconic Bay Squadron Changes Watch

The annual Change of Watch Dinner and Dance of the Peconic Bay Power Squadron took place at the Riverhead Polish Hall on Saturday evening, April 11. The chairman for the important occasion was William Spanburgh. Dexter Jacobs assumed command upon relieving Michael Velys.



Photos by Corw...

Past District Commander Earl Templeton serves as interim chairman as the watch is being changed.

### EDITORIAL from page 3

were reflected above, we would be paying the Post Office approximately a 165 percent profit. At the same time regular second class newspapers and magazines are showing a postal deficit of 149 percent. Our obvious question is "Does this make sense when controlled circulation publications must meet every standard that regular second class publications operate under?" The only difference is that our circulation is not mainly paid.

For too long the government has played politics with the Post Office. There has been an incredible amount of mismanagement, and we hope that the day will come soon when these inadequacies are eliminated if the postal service is run as a business. It has been demonstrated that private enterprise can enter the postal business and deliver mail at about half the price that it costs the government to do the same job.

The public is getting short changed. We are paying for inefficiency and poor service with high rates. We are paying for low morale by allowing the Post Office to fiddle away revenue without leaving enough money to pay people to operate the system efficiently.

Yes the time for change is long overdue. The Post Office should be removed from the political domain. There are people in this country who can move the mail a lot more efficiently and economically and once again restore pride in the postal tradition. This will never happen, however, while the Post Office is under the domination of politicians.

We hope that Congress has the guts to remove this plum from under its jurisdiction and give the people the kind of service they deserve. We urge you to write to your congressmen Pike, Javits and Goodell and demand that they support the president's move. Hopefully they will act accordingly. And why not?



District Commander Thomas Culyer passes the Charter of the Peconic Bay Squadron to the new commander, Dexter Jacobs.

cont. page 10

# DID YOU SUBSCRIBE?

# \$1.00

**ONLY** PER YEAR  
(Suffolk County Only)

brings you a full years subscrip-  
tion to Suffolk Life addressed  
directly to you and mailed to  
your address each week.

Name \_\_\_\_\_

Mailing Add. \_\_\_\_\_

Town \_\_\_\_\_

1 year \$1.00     2 years \$1.75     3 years \$2.50

(Outside of Suffolk County \$5.00 per year)

New Subscription     Renewal

Send to Subscriptions Department  
Box 262, Westhampton, N. Y.



## SUFFOLK LIFE

GRAPHIC ARTS CENTER

### PECONIC BAY SQUADRON CHANGES WATCH from page 4



Past District Commander Earl Templeton presents the past-commander's plaque to Peconic Bay's retiring commander, Michael Velys.



District Commander Thomas Culyer presents the Commander's flag to the new Commander of the Peconic Bay Power Squadron, Dexter Jacobs.

# Willmott's and Why-Nots

By David J. Willmott, Editor

## Annual Plea

For the sixth year Suffolk Life makes its annual plea for some sanity to prevail between our towns in the use of their recreational facilities. Many residents have cried out in vain over the years for some sort of mutual cooperation between the towns as to joint use of beaches, boating and fishing facilities. The town leaders go their merry ways each year, ignoring these pleas, and do nothing to alleviate this condition.

All of the eastern towns, have excellent but limited waterfront facilities. With the exception of Brookhaven, none has complete choice of facility; that is, if you live in one town you have the ocean at your disposal, and if you live in another town you have the sound. We don't know of any town where both sound and ocean facilities are available.

If the stripers are running in the sound, south shore residents can't fish off the north shore beaches because they need a resident beach permit to park. The same is true if the fish are running off the south shore, and, again, the same situation prevails for swimming. If you want to use the ocean, and you live on the north shore, you have to buy a non-resident permit and pay for this privilege. If you live outside the town of Riverhead and want to use the sound, you can't. You can't even buy a non-resident pass at any cost.

In our opinion this situation is asinine. We have repeatedly offered the suggestion that the town leaders mutually agree to honor each other's resident beach permits and allow all residents of the east end to enjoy the benefits of the area. The jealous attitude that has prevailed is not only selfish but self-defeating. We attempt to sell eastern Suffolk County as the complete vacation area and then deny not only ourselves but our guests the utilization of all our facilities.

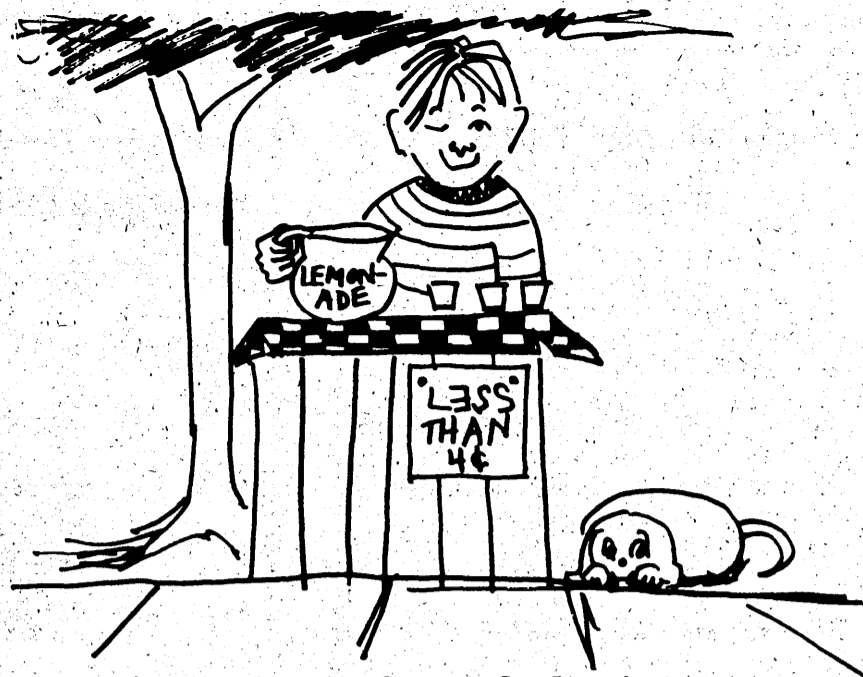
The argument put forth to justify this situation is that there is not enough room to take care of all the residents not to mention also letting "outsiders" in. This argument itself is testimony to the ineptness of planning on the part of our leaders. We have traditionally been a resort area for several generations and have capitalized handsomely on this fact. Still we have allowed our town water and recreation facilities to deteriorate to a point where we say there isn't room for year-round residents.

We do not believe this argument. We are avid beach goers and have found that with almost no exceptions the beaches have not been filled to overflowing. The exceptions we recall have been on July 4th weekends. We believe there is room for all of us to enjoy our areas. We don't see any solid argument for denying our neighbors the right to use each other's facilities. We believe that the town fathers just haven't bothered to take the initiative in contacting one another to set up such arrangements.

Now is the time to correct this situation. We plead with these officials to make arrangements now so that all residents can enjoy all of the recreational facilities here on the east end. And why not?

## Assembly Denies Consumer Savings

In the closing hours of the State Assembly a bill was passed making it unlawful for liquor stores to advertise or suggest that they are offering liquor at a saving. At



Open Competition Guarantees Free Enterprise

present, the courts have ruled that a liquor store can mention a price above the actual selling price with the words "less than" before it. In this way, the buyer knows that the actual selling price is one cent less than the stated figure. If the bill is signed by the governor you will have to go from store to store to find the best buys. This bill denies the consumer the right to be able to determine how much and where he can save.

We recommend that you write to Governor Rockefeller in Albany and urge him to veto this bill. And why not?

## Live Here, Work Here

Many top corporation executives, for all practical purposes, live out here on the east end of Long Island year-round. They maintain apartments or homes elsewhere, of course, so they can get to their offices in the New York area more conveniently, but they return to the east end as often as possible. To many the weekend trip to the Island is a way of life continuing after Labor Day well into November, perhaps including Christmas and then picking up again in early Spring. Many of the corporations headed up by these



# SUFFOLK LIFE

Offices and Plant Located on Montauk Highway, Westhampton N.Y.

Mailing address: Box 262, Westhampton, N.Y. 11977 - or Box 167 Riverhead, N.Y. 11901

Total circulation audited and verified to be in excess of

**59,000 WEEKLY**

Published every Wednesday in five market area editions  
Northern Brookhaven... 14,175 South Fork... 10,300  
Southern Brookhaven... 13,390 North Fork... 7,165  
Riverhead/Westhampton... 14,500

David J. Willmott - Editor and Publisher

Sherman B. Chace - Advertising Manager

John McKay - Production Manager

Tim Stalker - News Editor

Subscription Rate:  
In Suffolk County ..... \$1.00 per year  
Outside Suffolk County..... \$5.00 per year  
News stand single copy sales..... 10¢ per issue

Controlled Circulation - Postage paid at Riverhead N.Y. 11901  
\*\*\*\*\*

### GENERAL INFORMATION

LETTERS TO THE EDITOR - We encourage our readers to express their views regardless of opinion thru the Letters to the Editor column. All letters must be signed with author's signature and address. We will withhold names on request and assign a nom de plume.

NEWS AND PHOTOGRAPHS - Readers are welcome to submit ideas of interest and photographs for consideration of publication. All news and photographs become the property of Suffolk Life upon submittal and can not be returned for any reason.

ERRORS - Responsibility for errors in advertisements is limited to the value of the space occupied by the error.

CLIP THIS GRANTS AD

# Fabulous Ring Riot

THURSDAY  
APRIL 30

FRIDAY  
MAY 1

SATURDAY  
MAY 2



Come in and compare with your genuine diamonds. See if you can tell the difference. You'll be surprised, delighted, and amazed. Many of the wealthy people keep their real diamonds in the vault and wear these and their friends don't know the difference.

Some of these rings sold for as high as \$28.00. All rings set in sterling or 10k gold.

# \$4.99

plus sales tax

Mail Order add 25¢ ea.

Plus Sales Tax  
You Must Send Exact Size. You Cannot Exchange After Sale

Bring this certificate and \$4.99 plus tax and receive a LADIES' Sterling Silver or 10 kt. Gold Filled Ring, set with 1/2 kt.

DIAMOND REPRODUCTION SPARKLING FLASHING WITH RAINBOW FIRE!

**YOU MUST BRING THIS AD**  
Without this ad - would be \$15.99 - Limit: 2 to an ad

LADIES' 1 KT.	5.99
LADIES' 2 KT.	6.99
MEN'S RINGS	4.99 up

Do you have a Grant's Credit Account? Use it coast to coast.

## Grants KNOWN FOR VALUES

Riverhead Shopping Plaza, Rte. 58, Riverhead

**EDITORIAL** from page 3

executives are finding it increasingly difficult to lure middle management and junior executives to the metropolitan New York area. "Fun City's" reputation has made many rising corporation executives look elsewhere for jobs rather than move to the area. Some would bypass a promotion rather than accept a position in New York as the price of success.

Many corporations would like to relocate outside of the city. Some have moved to Westchester, north Jersey or Nassau County. Some have moved further out into Connecticut or even out of the eastern seaboard area entirely. Wherever they have been lured to, they have found locations more favorable from a tax standpoint and particularly more advantageous from the standpoint of environment. It certainly seems to be true that employees will be happier and more productive if they work outside of New York City.

It appears to us that the trend for business to move away from New York plus the fact that many executives already live out here for most of the year are a couple of strong sales points in the attempt to lure business to the east end. We have talked to men who have expressed the wish that they could move their businesses out here. There is no reason that they can't if the Suffolk County Air Force Base is promoted for that purpose. The base facility offers unlimited potential in this direction. There are the runways for corporate aircraft and for an air shuttle service to the city. There is a railroad siding nearby for rapid transit. There is land for building and expansion. There is a willing and trainable work force in the area. Best of all, there is an ideal environment for people to work, live and play in.

The fact remains that the east end would benefit tremendously from the relocation of selected industry

## The COLONIAL Shoppes

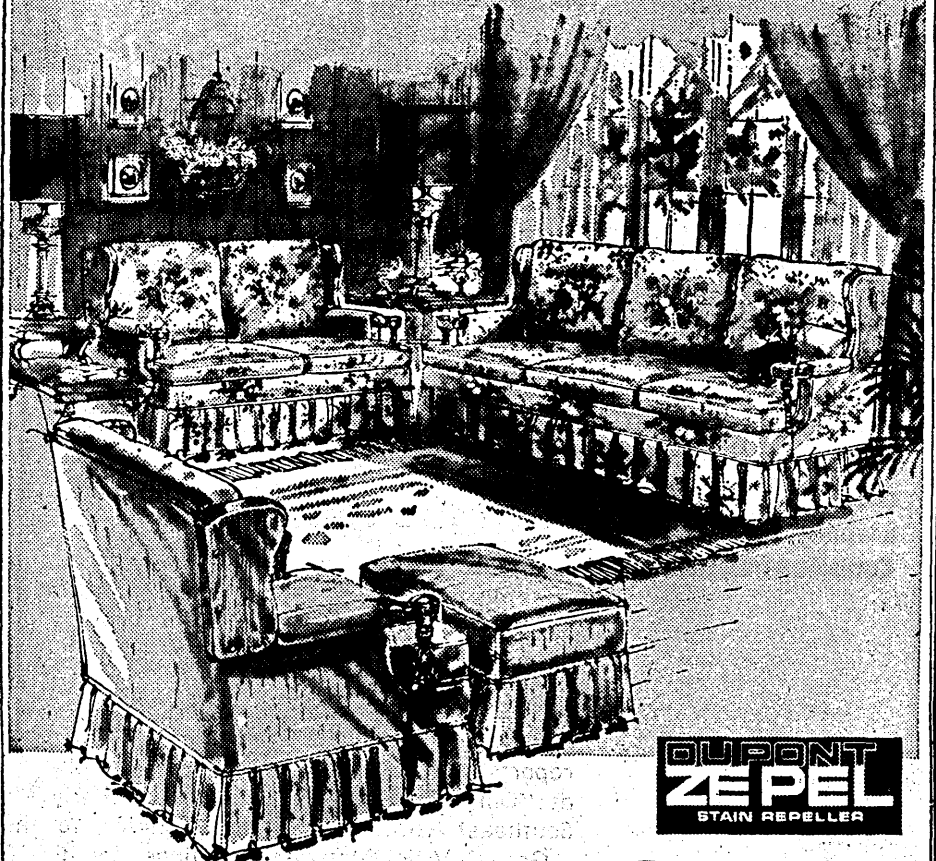
48 W. Main St.  
Riverhead, N.Y.



Daily 9 to 9 - Sat. to 6  
727-1042

# bright idea in decorating

8 PC. COMPLETE EARLY AMERICAN LIVING ROOM... NOTHING ELSE TO BUY!



**DUPONT ZEPHEL**  
STAIN REPELLER

AVAILABLE IN PINE OR MAPLE TRIM

# \$499.95

8 Pcs. Includes  
Sofa, Loveseat,  
Chair, Ottoman,  
2 Thick Pine  
Step Tables  
& 2 Specially Selected Lamps

We give you a large wing chair, ottoman, three cushion wingback sofa and matched loveseat (available in pine or maple trim). Plus 2 thick pine step tables and 2 specially selected lamps. Fabrics are Zepel protected. Built in plump reversible mellow-foam cushions, box pleated skirts, button tufted backs. Come see and save on this complete 8-pc. living room.

to our area. From the standpoint of jobs, a year-round boost in our economy and a broadened tax base we have everything to gain. We hope that our county officials, who are in charge of this project, will take notice and seek out those people who have chosen eastern Long Island as their favorite home. These are the people who would like to get out of New York and who would be able to produce better in an area where they enjoy life to its fullest. Let us hope that immediate steps are being taken to take advantage of this golden opportunity for eastern Long Island. And why not?